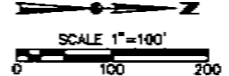
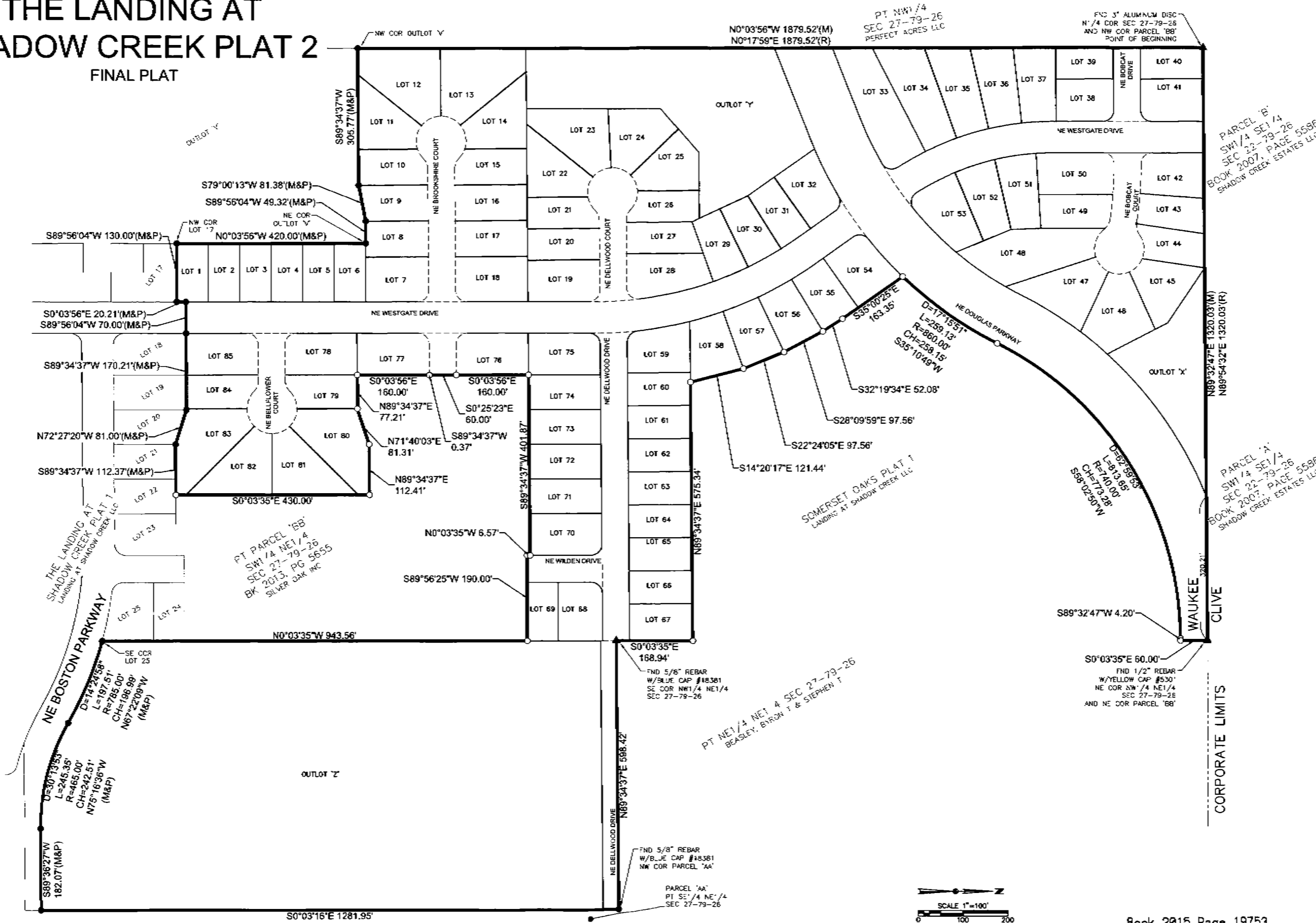




# THE LANDING AT SHADOW CREEK PLAT 2 FINAL PLAT

L.P. & S.P. SURVEYOR LICENSE NO. 1601, R.F. SURVEY REPORT FORM (COMMITTEE)  
 FILE DATE 11/20/13 DATE PLOTTED 11/24/2015 1:54 PM  
 PLOTTED BY JAC DUNN



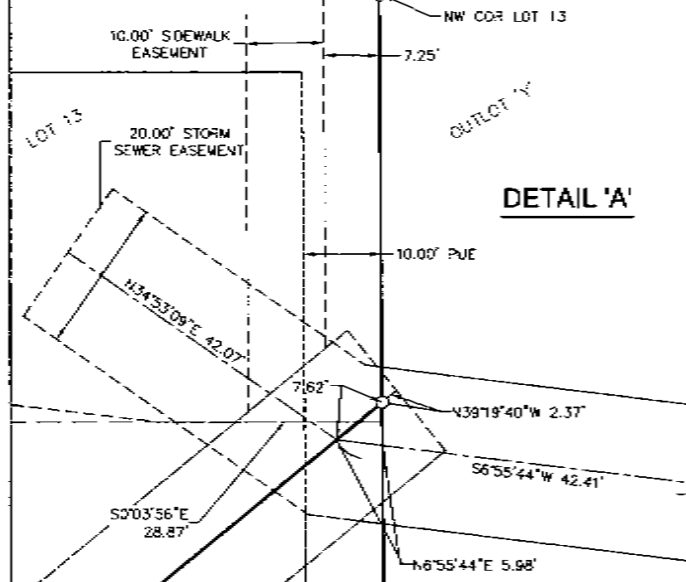
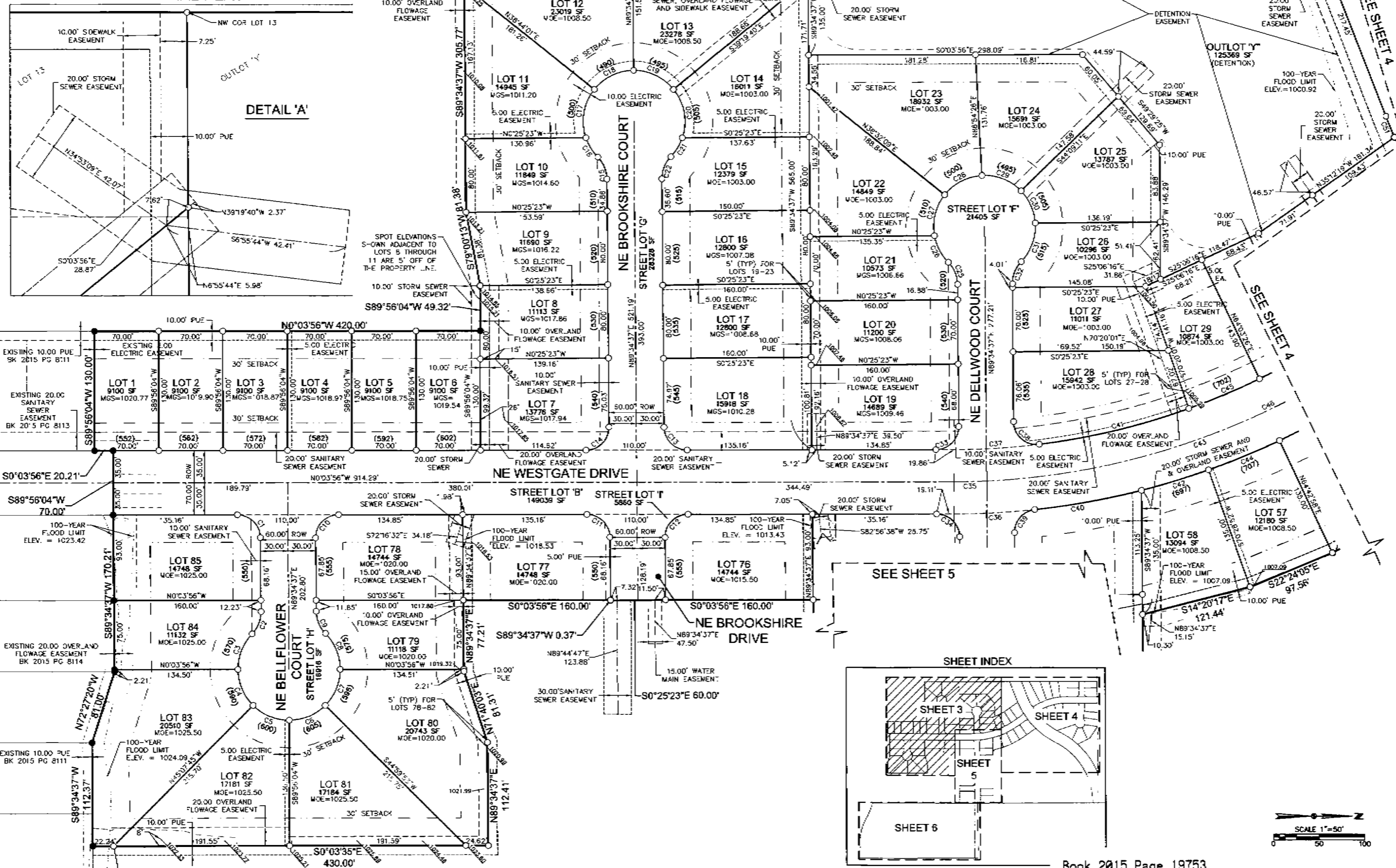
DATE	REVISIONS	DATE
		07/21/15

3405 S.E. CROSSROADS DRIVE, SUITE G  
 GRIMES, IOWA 50111  
 PHONE: (515) 389-4400 FAX: (515) 369-4410  
 ENGINEER: TECH:



## THE LANDING AT SHADOW CREEK PLAT 2 FINAL PLAT

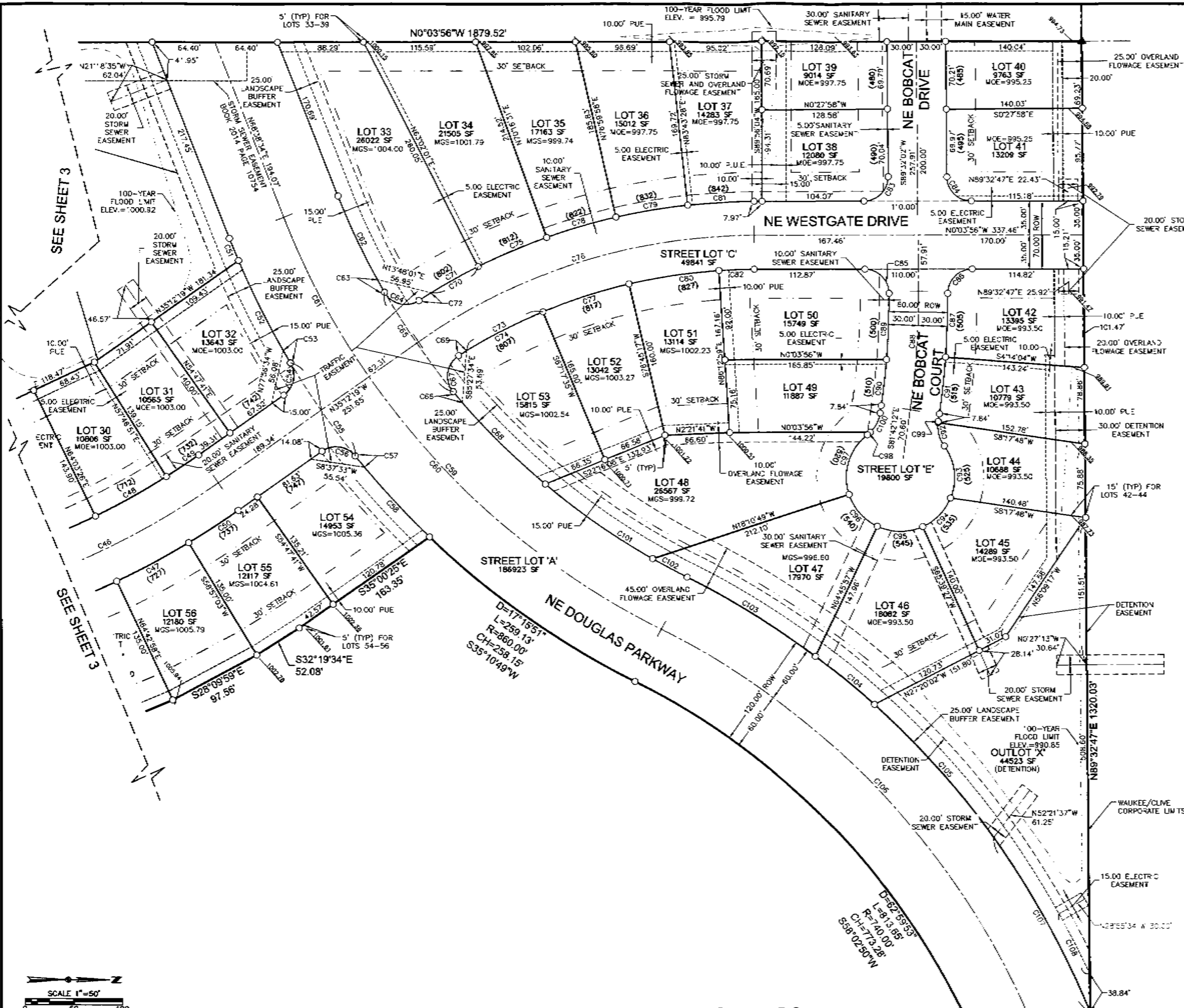
# THE LANDING AT SHADOW CREEK PLAT 2 FINAL PLAT



FILE # 1599458000/1599458000 (L) 1599458000/1599458000 (L)  
 FILE DATE: 11/21/15 DATE PLATTED: 11/24/2015 11:14 AM  
 PLATTED BY: J.A. SHAW

DATE	10/13/15	08/20/15	07/31/15
REVISIONS		THIRD SUBMITTAL	FIRST SUBMITTAL
3405 S.E. CROSSROADS DRIVE, SUITE G GRIMES, IOWA 50111 PHONE: (515) 369-4400 FAX: (515) 369-4410			TECH:
CIVIL DESIGN ADVANTAGE			ENGINEER:
			WAUKEE, IOWA
<b>THE LANDING AT SHADOW CREEK PLAT 2 FINAL PLAT</b>			3/6
			1408.409

# THE LANDING AT SHADOW CREEK PLAT 2 FINAL PLAT



DATE	REVISIONS
10/19/15	THIRD SUBMITTAL
08/20/15	SECOND SUBMITTAL
07/31/15	FIRST SUBMITTAL

3405 S.E. CROSSROADS DRIVE, SUITE G  
GRIMES, IOWA 50111  
PHONE: (515) 369-4400 FAX: (515) 369-4410



**THE LANDING AT SHADOW CREEK PLAT 2**  
FINAL PLAT

# THE LANDING AT SHADOW CREEK PLAT 2

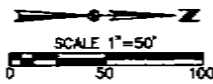
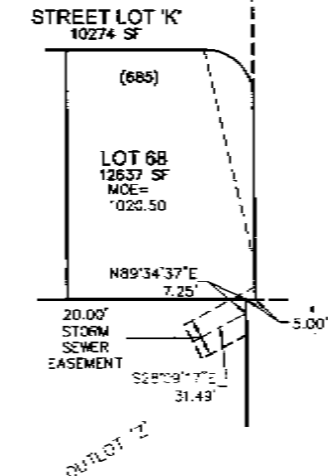
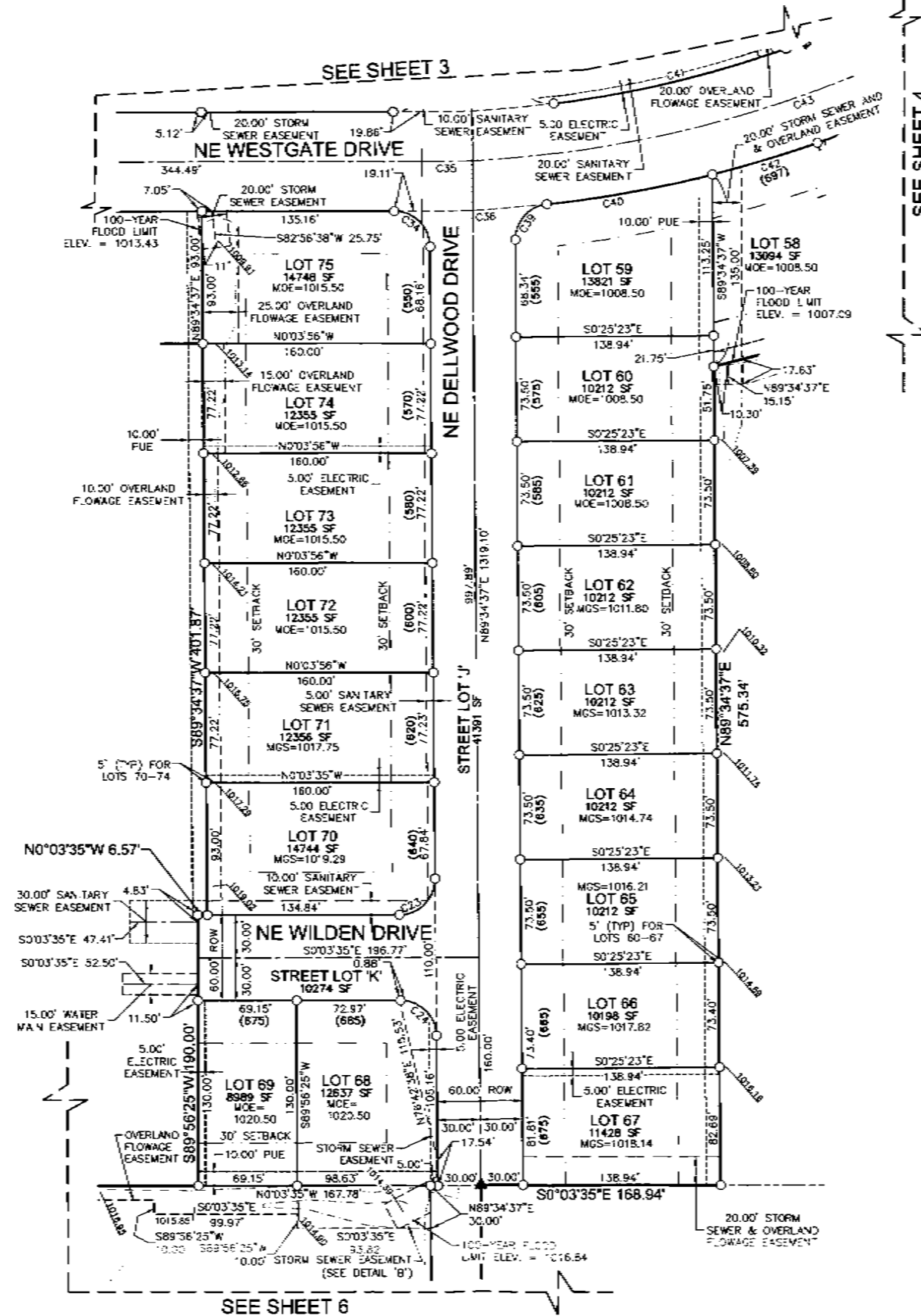
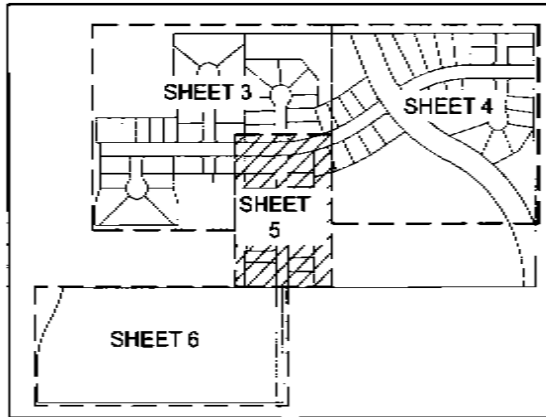
## FINAL PLAT

REVISIONS	DATE	10/13/15	08/20/15	07/21/15
THIRD SUBMITTAL				
SECOND SUBMITTAL				
FIRST SUBMITTAL				
3405 S.E. CROSSROADS DRIVE, SUITE G GRIMES, IOWA 50111 PHONE: (515) 369-4400 FAX: (515) 369-4410				
ENGINEER:				TECH:
 <b>CIVIL DESIGN ADVANTAGE</b> WAUKEE, IOWA				
<b>THE LANDING AT SHADOW CREEK PLAT 2</b> <b>FINAL PLAT</b>				
<div style="border: 1px solid black; padding: 5px; display: inline-block;"> <b>5</b>  <hr/> <b>6</b> </div>				
Book 2015 Page 19753 26 of 27				

### NOTE

- FIVE FOOT WIDE PUBLIC SIDEWALKS SHALL BE INSTALLED AS PART OF INDIVIDUAL LOT DEVELOPMENT. THE PUBLIC SIDEWALK ALONG OUTLOT "X" AND "Y" AND NE DOUGLAS PARKWAY WAS INSTALLED AS PART OF THE PLAT IMPROVEMENTS. THE SIDEWALK LOCATED BETWEEN LOTS 13/14 WAS CONSTRUCTED AS PART OF THE PLAT IMPROVEMENTS. PRIOR TO CONSTRUCTION OF ANY SIDEWALKS REFER TO THE PROJECT CONSTRUCTION DRAWINGS AND CONFIRM WITH CITY THE LOCATION, WIDTH AND ELEVATION OF SIDEWALKS. WIDTH AND ELEVATION OF SIDEWALKS.
- ANY ELEVATIONS SHOWN ON THE FINAL PLAT WERE PROVIDED BY PROJECT ENGINEER AND ARE NOT CERTIFIED BY THIS SURVEYOR.
- ANY SET MONUMENTATION SHOWN ON THIS PLAT WILL BE COMPLETED WITHIN ONE YEAR FROM THE DATE THIS PLAT WILL BE RECORDED.
- STREET LOTS "A", "B", "C", "D", "E", "F", "G", "H", "I", "J", "K", AND "L" ARE DEDICATED TO THE CITY OF WAUKEE FOR PUBLIC RIGHT OF WAY BY RECORDING THE PLAT AS STATED IN CHAPTER 354.19 IN THE CODE OF IOWA.
- THE DETENTION POND LOCATED IN OUTLOT "X" AND "Y" WILL BE MAINTAINED BY THE HOMEOWNER'S ASSOCIATION.
- THE LANDSCAPE BUFFERS ALONG NE DOUGLAS PARKWAY WILL BE MAINTAINED BY THE INDIVIDUAL LOT OWNERS.
- PARKLAND DEDICATION REQUIREMENTS FOR THE LANDING AT SHADOW CREEK PLAT 2 HAVE BEEN SATISFIED WITH THE LANDING AT SHADOW CREEK PLAT 1.

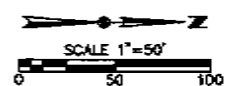
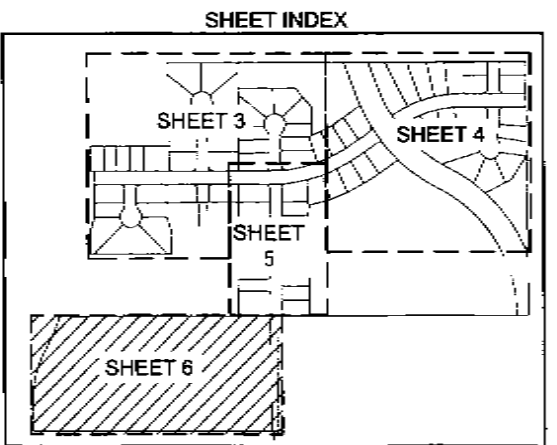
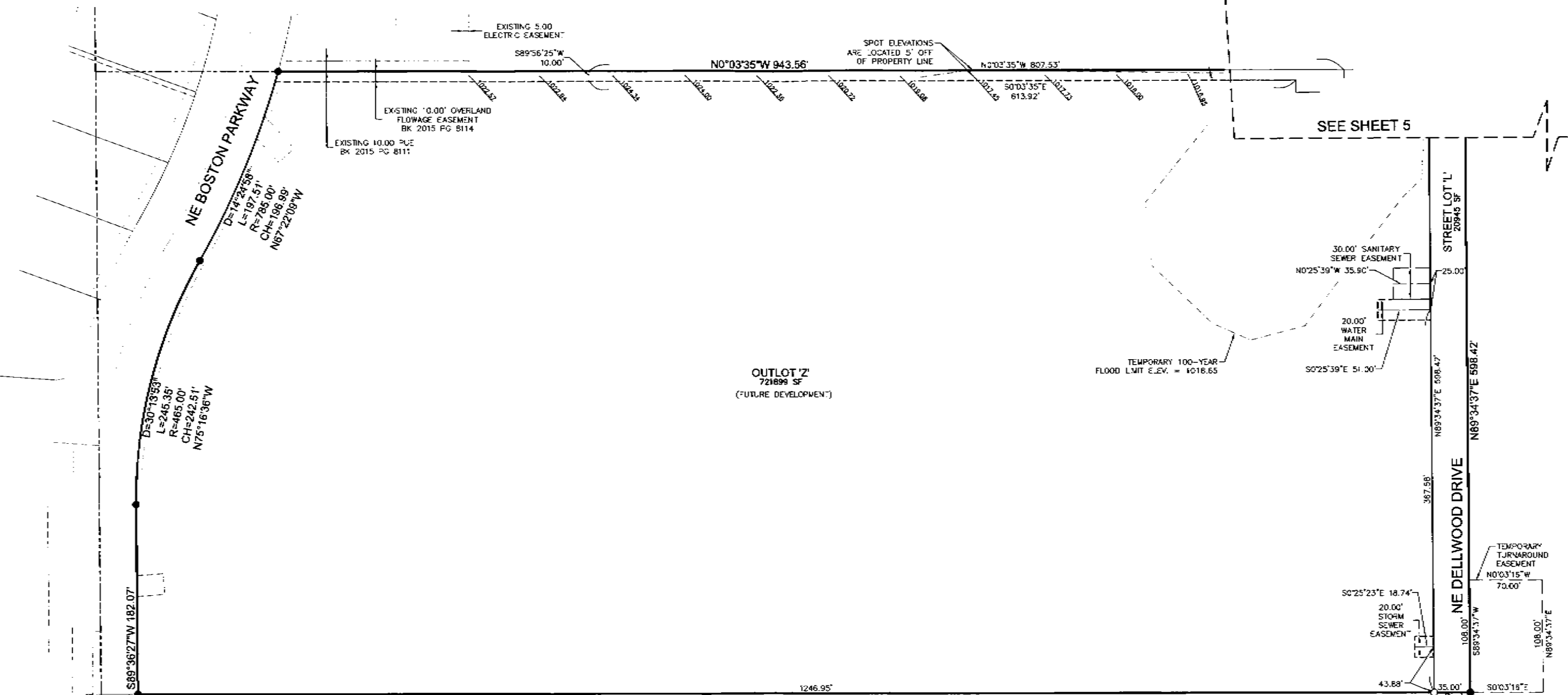
### SHEET INDEX



DETAIL 'B'  
NOT TO SCALE

# THE LANDING AT SHADOW CREEK PLAT 2

## FINAL PLAT



FILE: S:\PROJECTS\2015\2015-01-15\2015-01-15-01\2015-01-15-01-01.dwg  
 PLOT DATE: 11/24/2018 10:14 PM  
 PLOT BY: JAY BRADY

REVISIONS	DATE
THIRD SUBMITTAL	10/13/18
SECOND SUBMITTAL	08/30/18
FIRST SUBMITTAL	07/31/18

3405 S.E. CROSSROADS DRIVE, SUITE G  
 GRIMES, IOWA 50111  
 PHONE: (515) 369-4400 FAX: (515) 369-4410  
 ENGINEER: \_\_\_\_\_ TECH: \_\_\_\_\_



WAUKEE, IOWA

# THE LANDING AT SHADOW CREEK PLAT 2

## FINAL PLAT